



تلال
TILAL

by areen



CONTENT

| | | |
|----|-------|--------------|
| 01 | ————— | Introduction |
| 02 | ————— | About Areen |
| 03 | ————— | About Tilal |
| 04 | ————— | Floor Plans |
| 05 | ————— | Amenities |



Introduction

*Tilal Where Nature
and Luxury Unite.*

Tilal invites residents to lead an exclusive lifestyle, rooted in a lively social environment where like-minded neighbors soon turn into friends/a community. The residential destination boasts a signature collection of spacious villas with 'feel at home' design, paying tribute to minimalist elegance while offering a safe and highly accessible lifestyle where top-class amenities are just few steps away. By blending playful details with a friendly ambiance, Tilal promises a seamless living experience where joy truly abounds.





About Areen

About Areen

Masterplan

Areen Development stands as an expansive and enticing mixed-use destination in the Southern Region of the Kingdom of Bahrain. Spanning nearly 2 million square meters, Areen is crafted to host a vibrant community of around 25,000 individuals.

Offering a rich tapestry of experiences, Areen seamlessly integrates commercial offices, retail havens, an indoor shopping and entertainment hub, distinctive standalone restaurants and cafes, as well as a variety of leisure and entertainment outlets. The landscape is further enriched by the inclusion of 4 and 5-star hotels, medical and health facilities, and an array of distinctive residential projects.





About Areen

Wildlife Park & Reserve

Areen Wildlife Park & Reserve, established in 1976, spans a total area of 7 square kilometers. This zoological sanctuary showcases a diverse collection of species, including those native to Bahrain, both in terms of plants and animals, alongside species originating from Africa and South Asia.

Within the park's expanse, you'll encounter a stunning landscape adorned with 100,000 planted flora and trees. The wildlife population is equally impressive, with over 45 species of animals, 82 species of birds, and 25 species of flora contributing to the park's rich biodiversity.



About Tlal



About Tlal

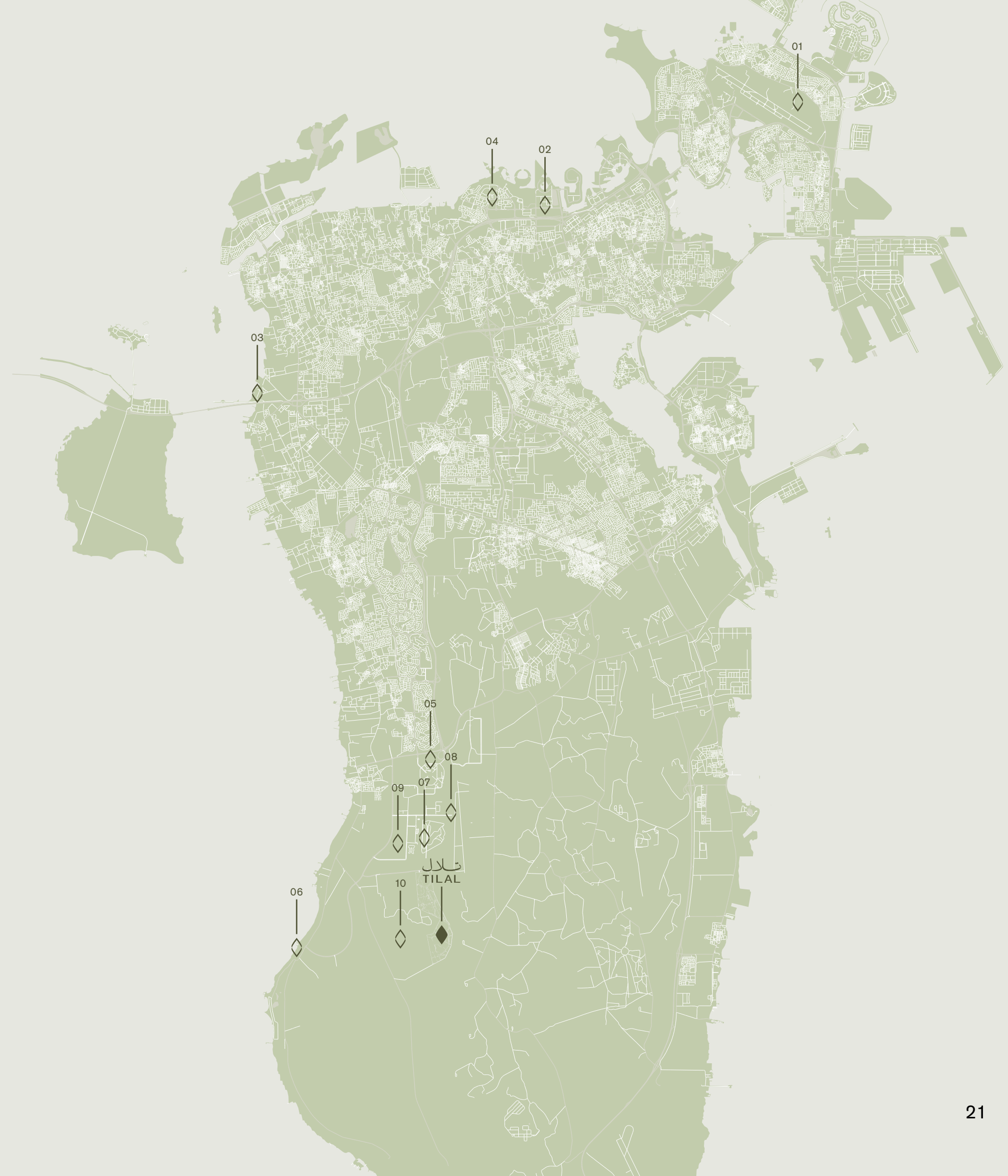
Looking Closer

Discover Tlal, a remarkable upcoming residential destination nestled within the breathtaking Areen Heights. Overlooking a picturesque green valley and offering panoramic views of the renowned Areen Wildlife Park and Reserve, Tlal promises an unparalleled living experience.

As the third residential project within the Areen Masterplan, Tlal spans an expansive 93,000 square meters in the southern part of Areen. It is meticulously designed to offer a collection of 184 meticulously crafted villas and townhouses, with options ranging from 3 to 5 bedrooms.

About Tlal

Location & Map



Area

- 01 BAHRAIN INTERNATIONAL AIRPORT
- 02 CITY CENTER OF MANAMA
- 03 KING FAHAD CAUSEWAY
- 04 SEEF DISTRICT
- 05 UNIVERSITY OF BAHRAIN
- 06 BILAJ AL JAZAYER
- 07 BAHRAIN INTERNATIONAL CIRCUIT
- 08 AL DANA AMPHITHEATRE
- 09 EXHIBITION WORLD BAHRAIN
- 10 AREEN WILDLIFE PARK & RESERVE

Proximity

| | |
|-------|--------|
| 48 km | 45 min |
| 36 km | 35 min |
| 34 km | 30 min |
| 33 km | 30 min |
| 12 km | 15 min |
| 10 km | 12 min |
| 9 km | 12 min |
| 9 km | 12 min |
| 7 km | 8 min |
| 5 km | 8 min |

About Tidal

Key Features

85 Exquisite Villas

Choose from luxurious 4 and 5-bedroom villas, thoughtfully designed to cater to your every need with the flexibility of adding an additional penthouse to offer more livable space.

99 Stylish Townhouses

Discover elegant 3 and 4-bedroom townhouses, offering a contemporary and comfortable lifestyle.

Recreational Center

Unwind and indulge in the exceptional recreational facilities available exclusively to Tidal residents.

Serene Mosque

Find solace and tranquility in the beautifully designed mosque within the community.

Retail Units

Conveniently located retail units cater to your everyday needs, ensuring the utmost convenience for residents.





About Tlal

Elevated Living

Designed with meticulous attention to detail, the villas and townhouses at Tlal feature a variety of layouts to suit every family's unique requirements. With four different villa layouts and four townhouse layouts, each unit offers the option and provisions for future expansions.

Experience the epitome of modern living within these thoughtfully designed homes. The units boast spacious areas, ensuring ample room for relaxation and gathering. From in-suite toilets and open-plan halls to dedicated maid's rooms and driver's rooms, every aspect of comfort and convenience has been carefully considered. Moreover, the villas provide direct exposure to Areen's natural topography, with surrounding hills and a state-of-the-art green belt at the heart of the project.



Floor Plans
Villas



85 Exquisite Villas

Choose from luxurious 4 and 5-bedroom villas, thoughtfully designed to cater to your every need.

Villas

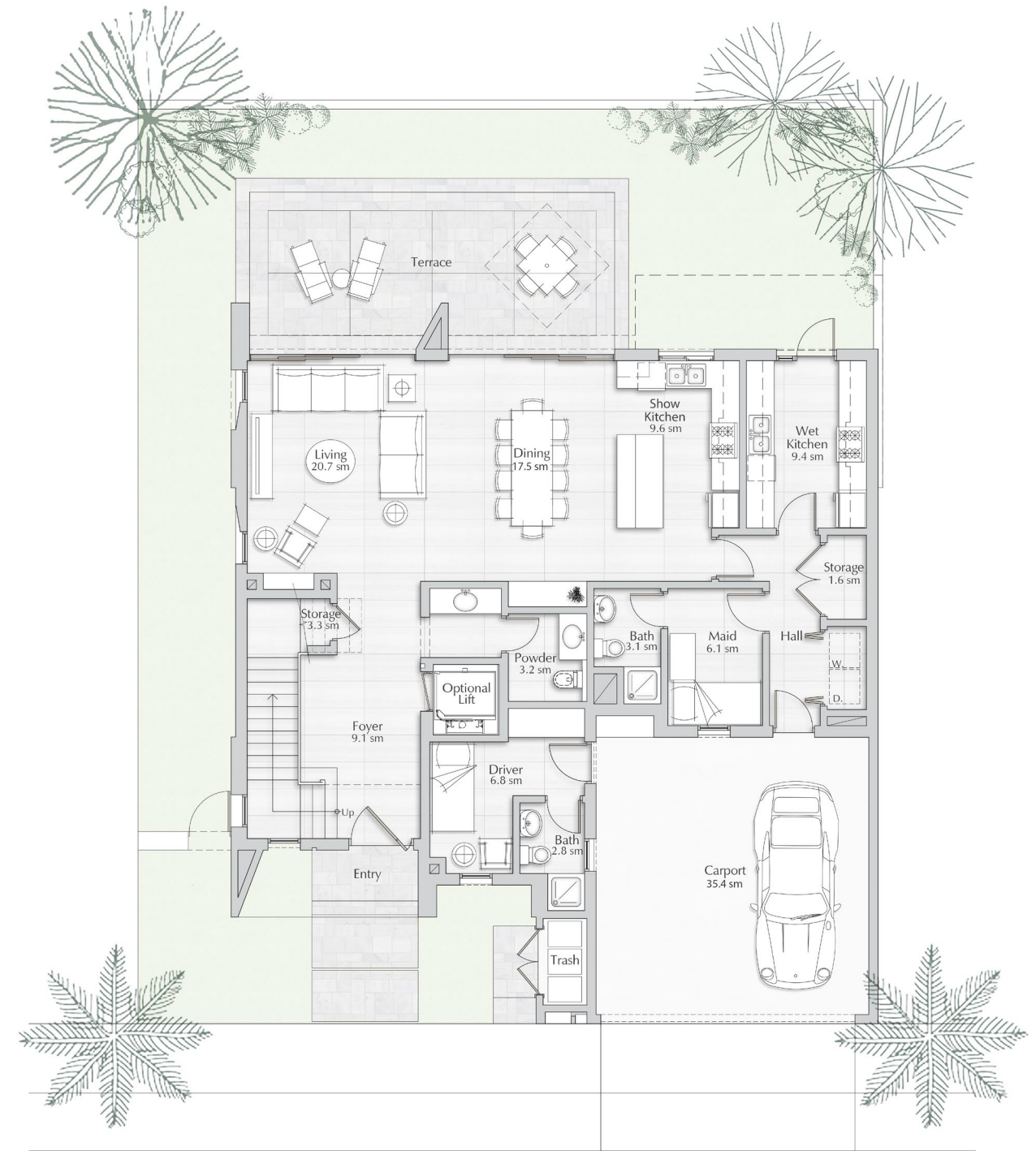
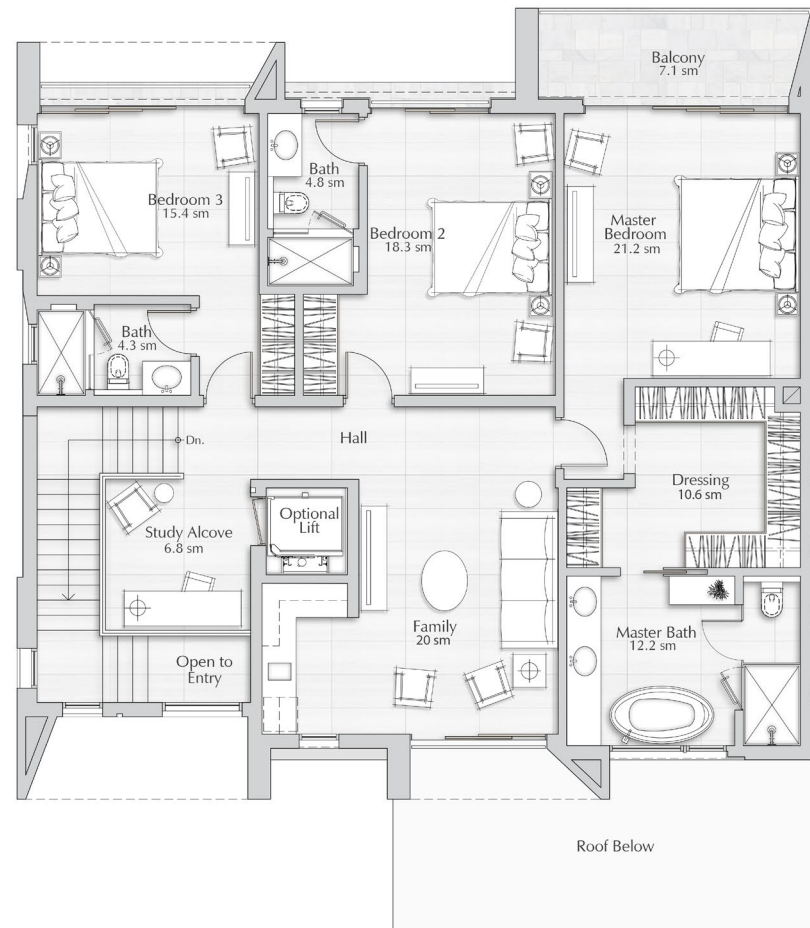
Floor Plans

Experience the epitome of luxury living with our selection of luxurious 4 and 5-bedroom villas. Meticulously crafted to cater to your every need, these residences offer a seamless blend of elegance and functionality.

Our villas offer an exceptional opportunity to elevate your living experience even further. With the flexibility to add an additional penthouse, you can expand your domain and create a truly extraordinary residence.

Luxury, flexibility, and unparalleled craftsmanship await you at our residential project. Choose a villa that reflects your discerning taste and immerse yourself in a world of elevated living.





Villa 1

PLOT AREA (S.M)
323.1 to 411.8

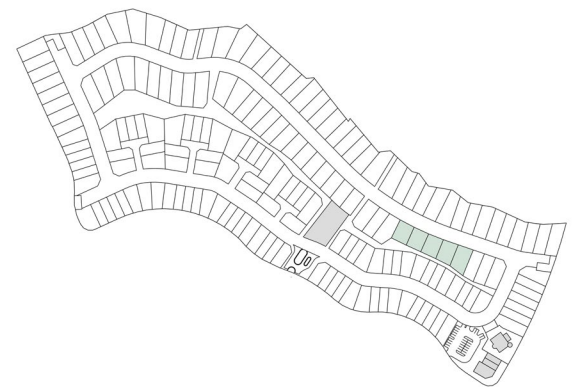
BUA (S.M)
351.6

NO OF BR
3 to 4

UNITS NO
5

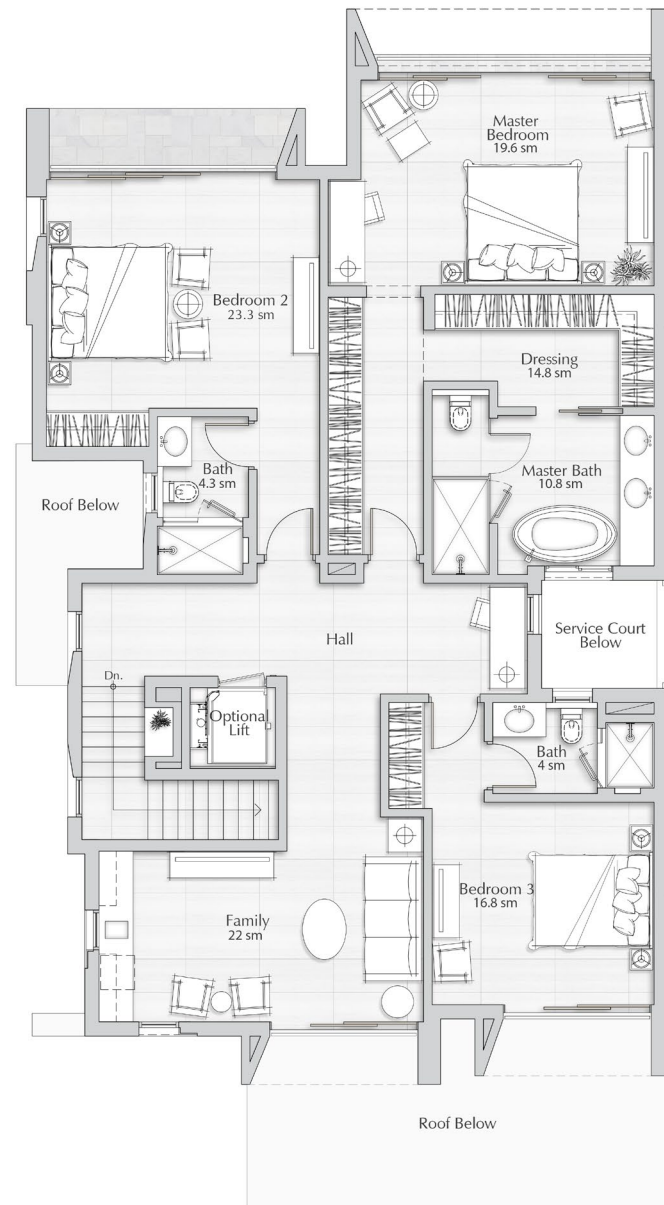
KEY FEATURES:

1. Driver's Room.
2. Greenbelt View from the Backyard.

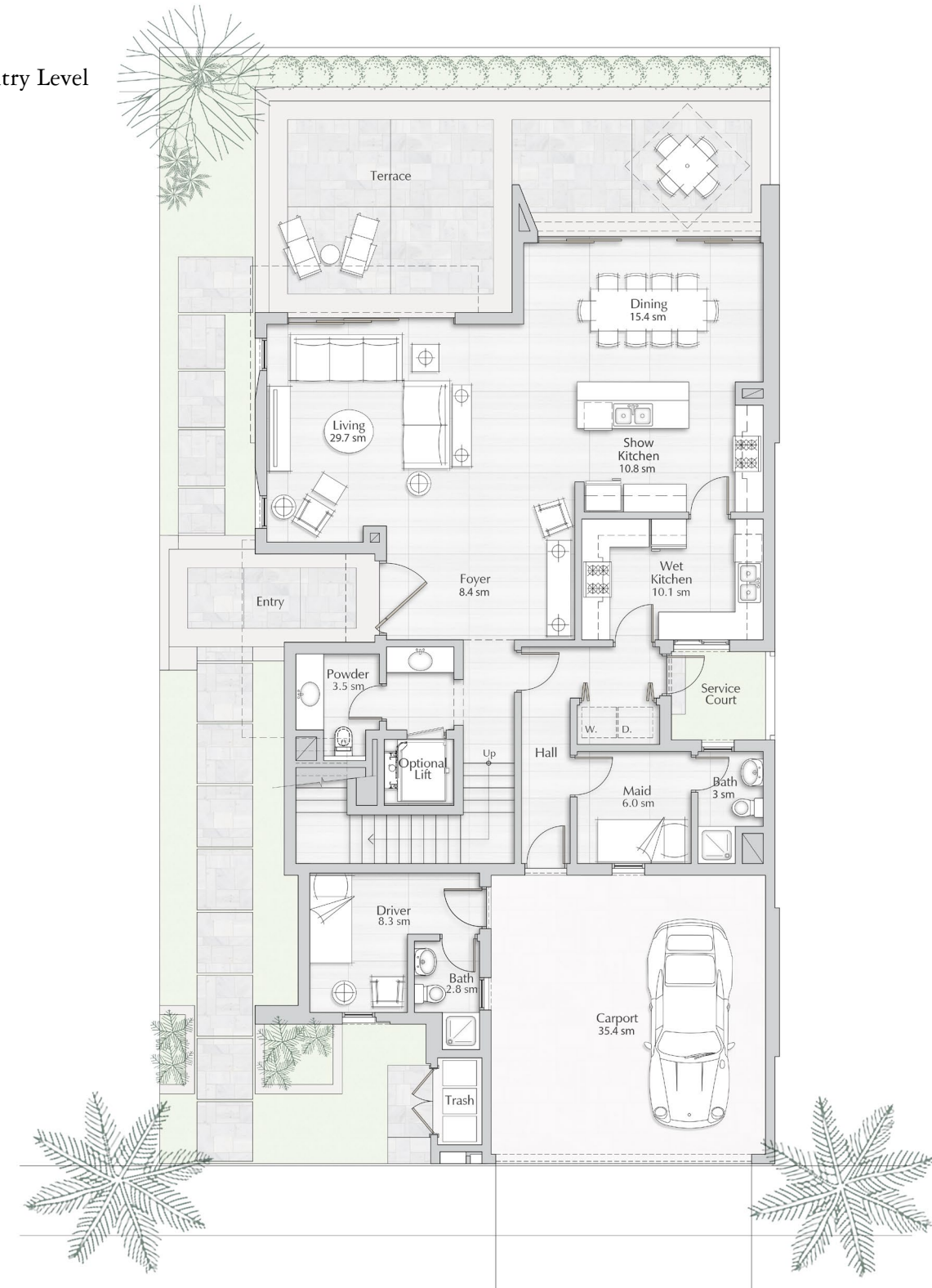




First Level



Entry Level



Villa 2

PLOT AREA (S.M)
330.9 to 378

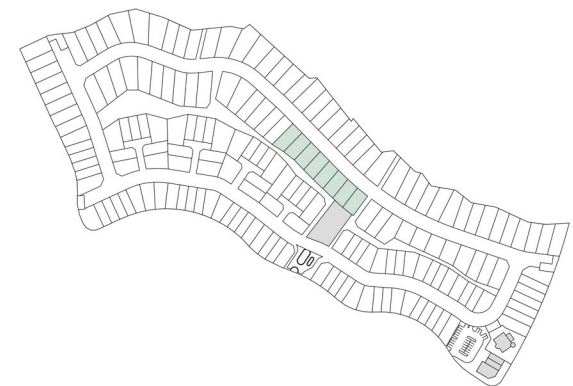
BUA (S.M)
365.1

NO OF BR
3 to 4

UNITS NO
8

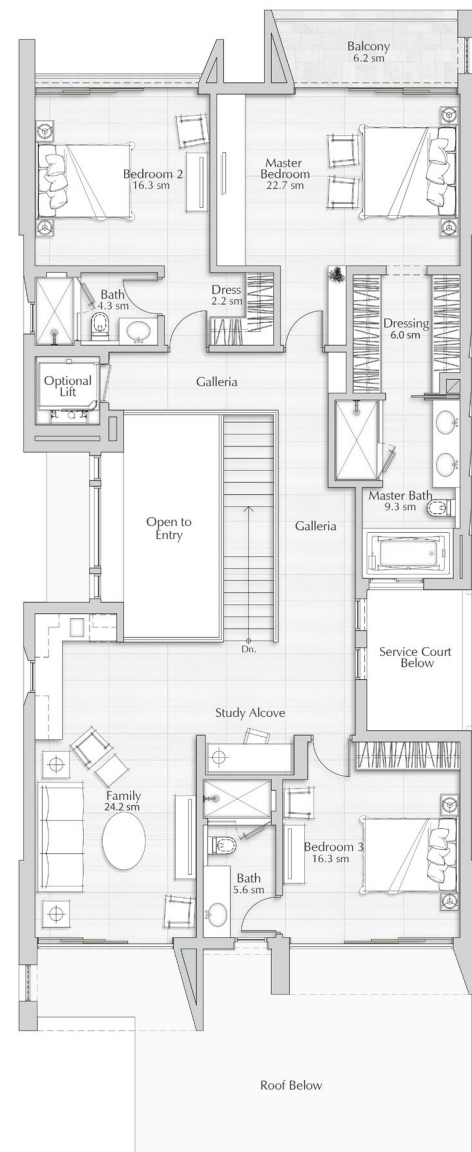
KEY FEATURES:

1. Driver's Room.
2. Greenbelt view from the Backyard.

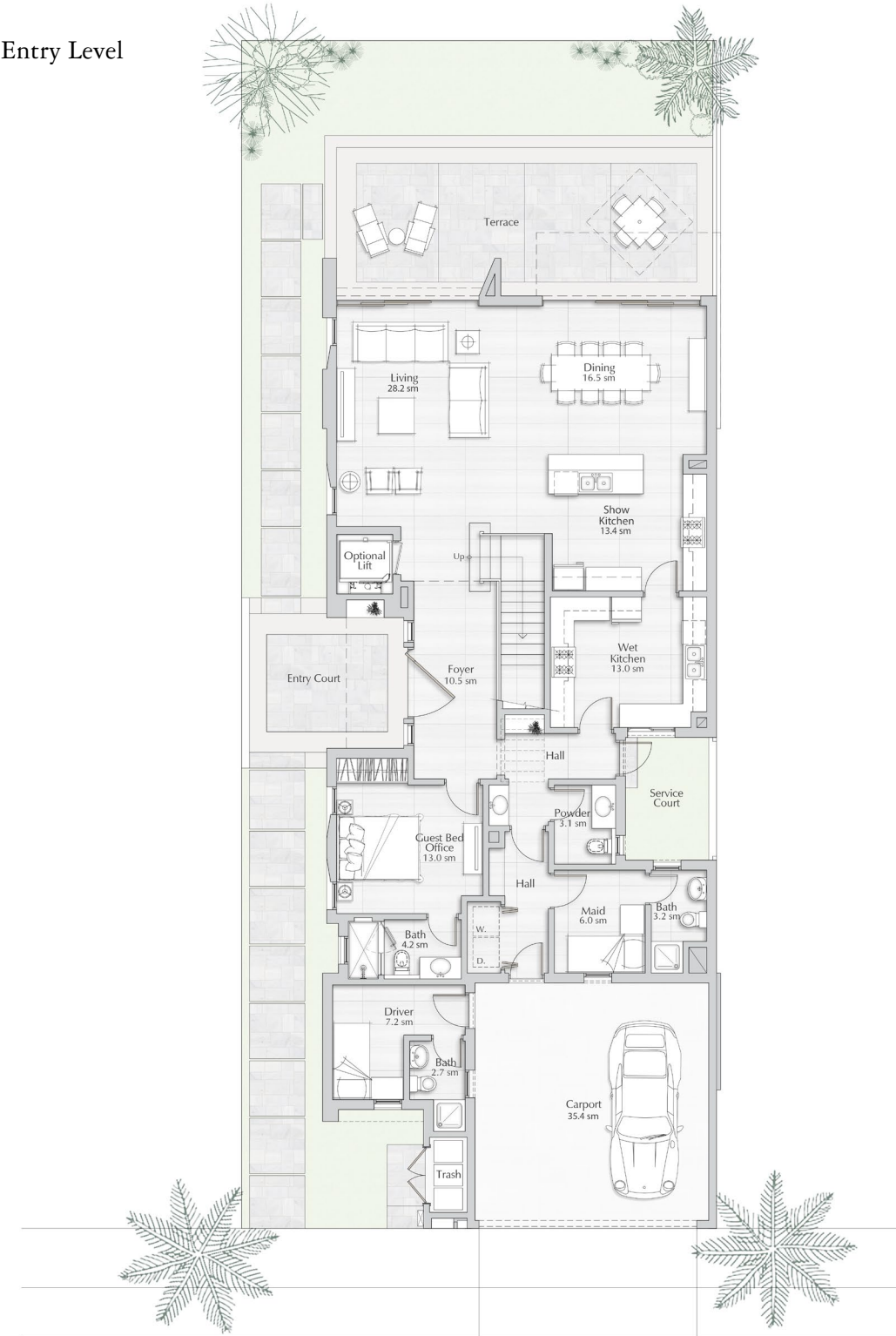




First Level



Entry Level



Villa 3

PLOT AREA (S.M)
352.7 to 516.7

BUA (S.M)
390.7

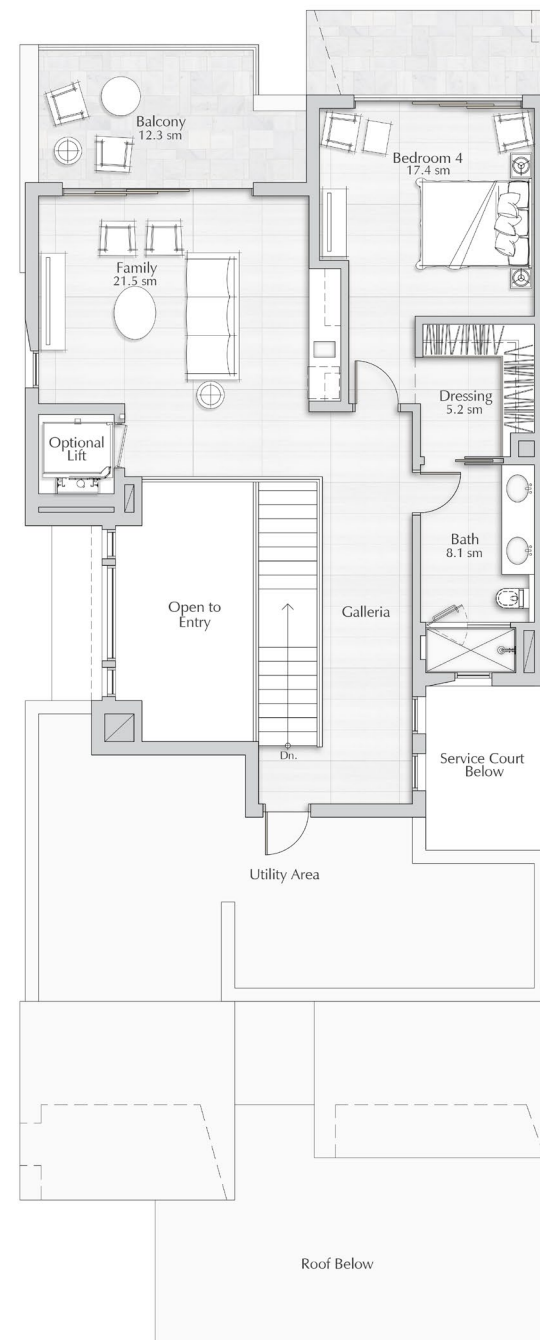
NO OF BR
4 to 6

UNITS NO
50

KEY FEATURES:

1. Driver's Room.
2. Optional penthouse.
3. Some units have Wadi views.
4. Some units have Greenbelt views.





Villa 3

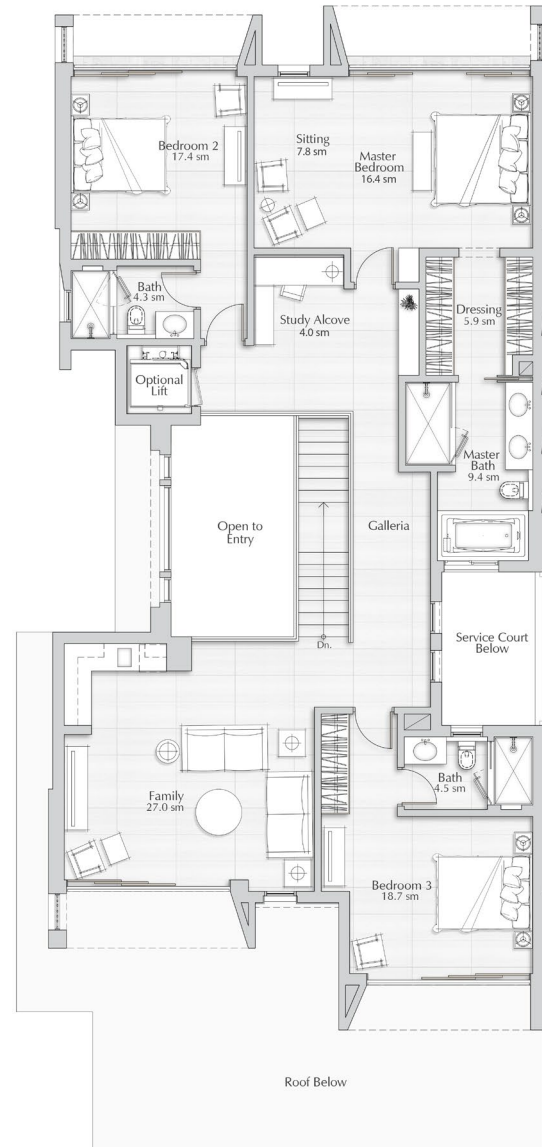
OPTIONAL PENTHOUSE
108.8

The flexibility of adding an additional penthouse to offer more livable space

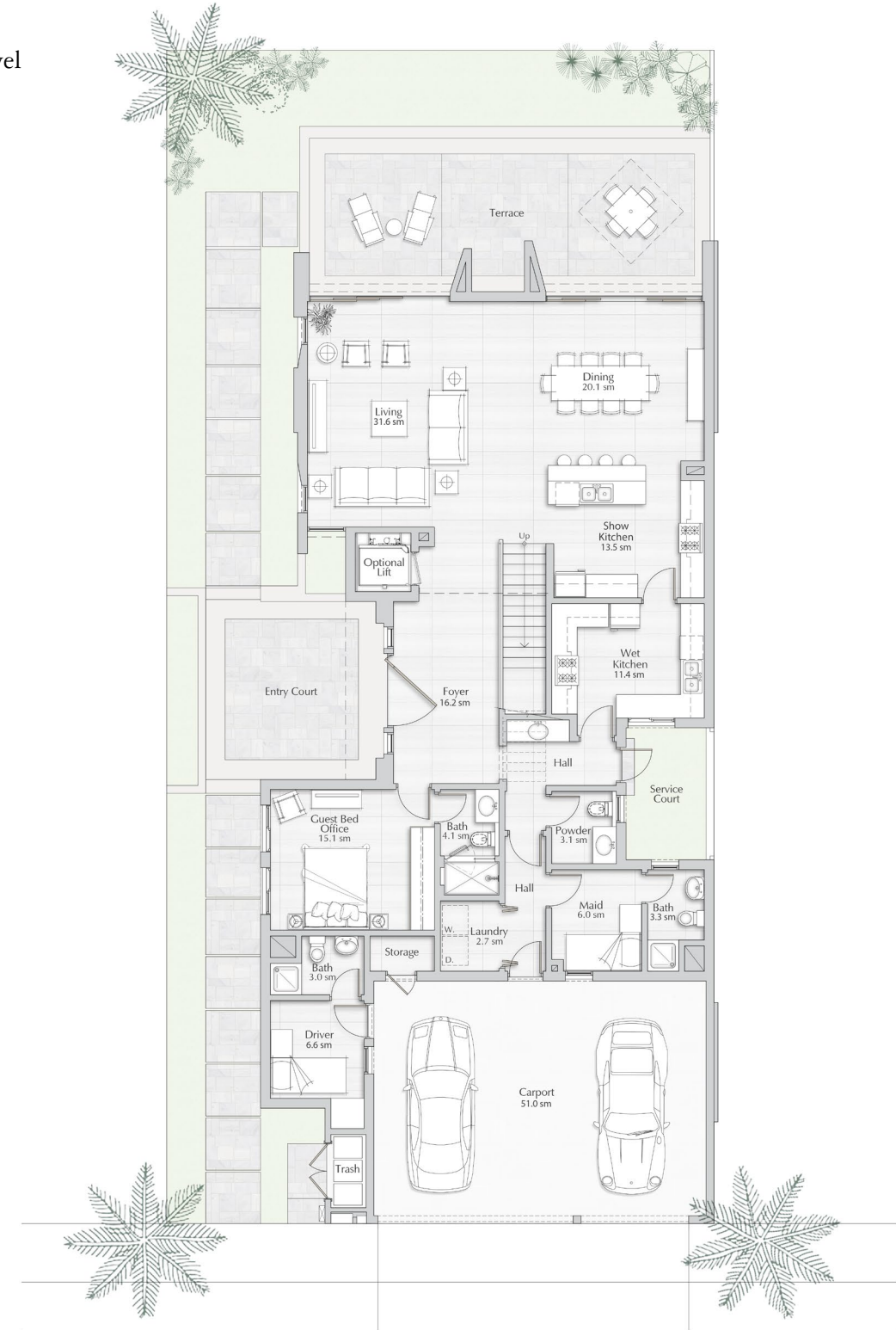




First Level



Entry Level



Villa 4

PLOT AREA (S.M)
421.5 to 610.7

BUA (S.M)
424.9

NO OF BR
4 to 6

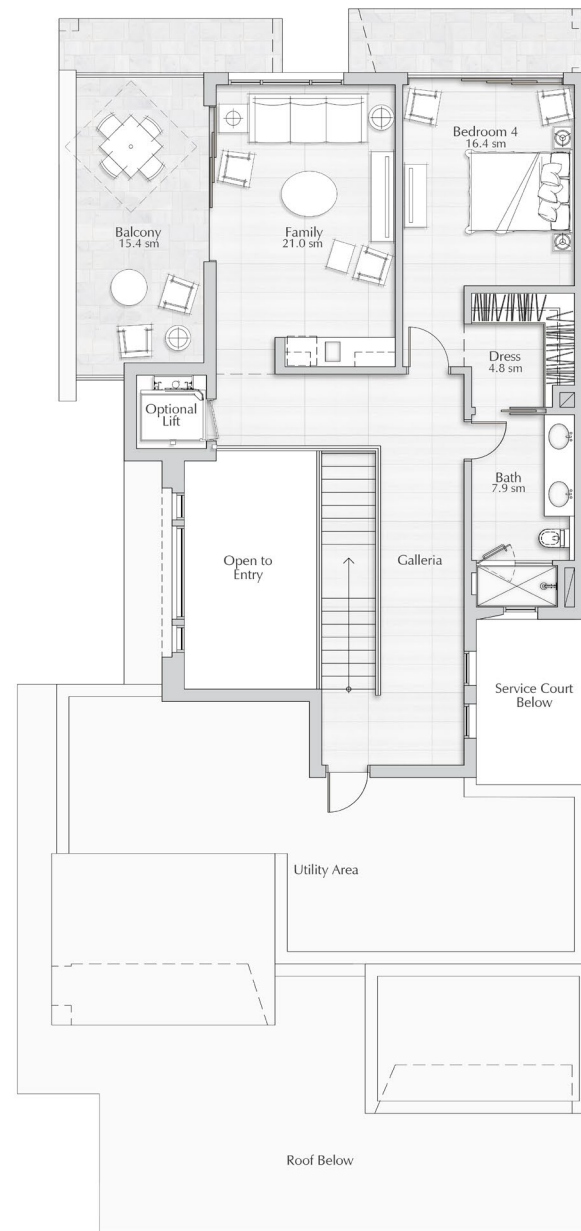
UNITS NO
22

KEY FEATURES:

1. Driver's Room.
2. Optional penthouse.
3. Some units have Wadi views.
4. Some units have Greenbelt views.



Optional Penthouse Level



Villa 4

OPTIONAL PENTHOUSE

127

The flexibility of adding an additional penthouse to offer more livable space





Floor Plans
Townhouses



99 Stylish Townhouses

Discover elegant 3 and 4-bedroom townhouses, offering a contemporary and comfortable lifestyle.

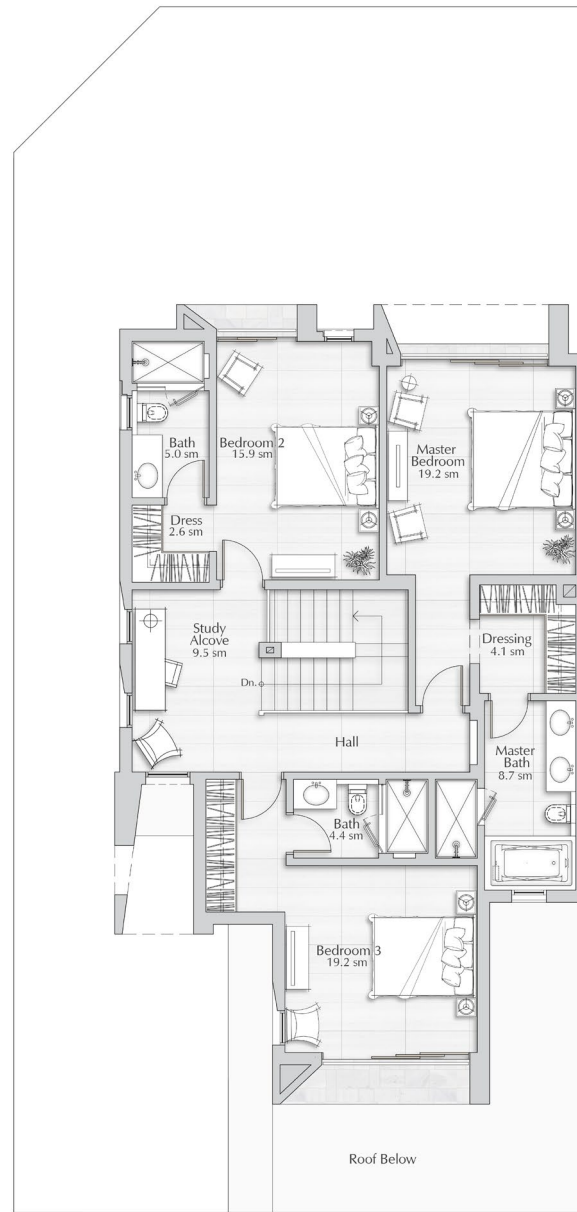
Townhouses

Floor Plans

Our residential project presents a captivating selection of townhouses, where contemporary design meets unparalleled comfort. Immerse yourself in the sophisticated ambiance of our thoughtfully crafted 3 and 4-bedroom homes, meticulously designed to elevate your lifestyle.

Beyond the walls of your home, we offer the option the flexibility to expand your living area with a stunning penthouse addition. Embrace the freedom to customize your living space and create a truly exceptional residence that suits your unique preferences and desires.





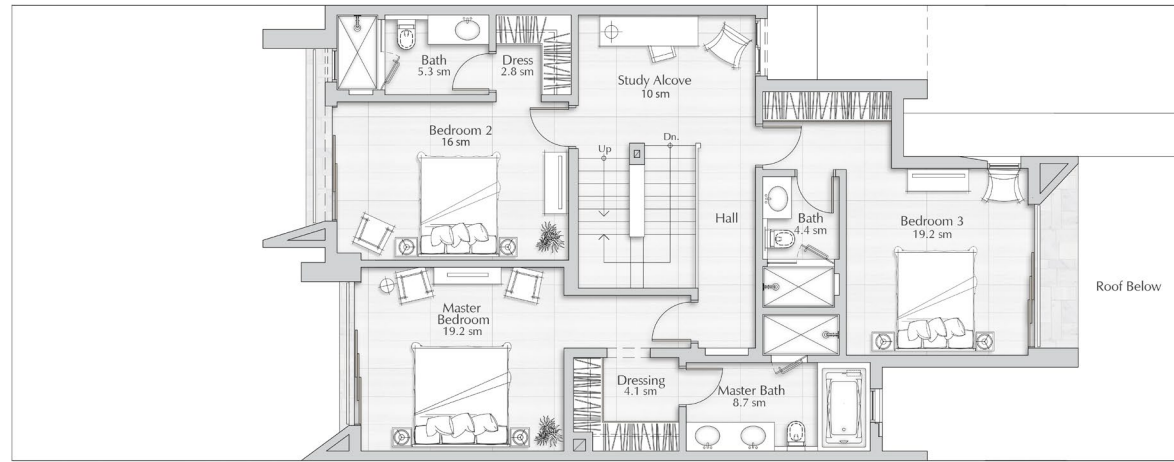
Townhouse 1

| PLOT AREA (S.M) | BUA (S.M) | NO OF BR | UNITS NO |
|-----------------|-----------|----------|----------|
| 283.2 to 434 | 275.1 | 3 | 41 |

- KEY FEATURES:**
1. Some units have Greenbelt views.
 2. Some units are near the Mosque/Retail area.



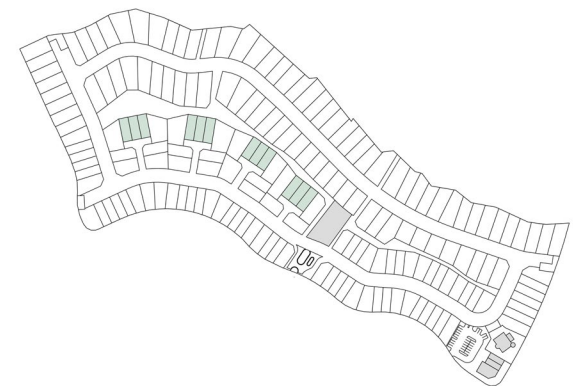


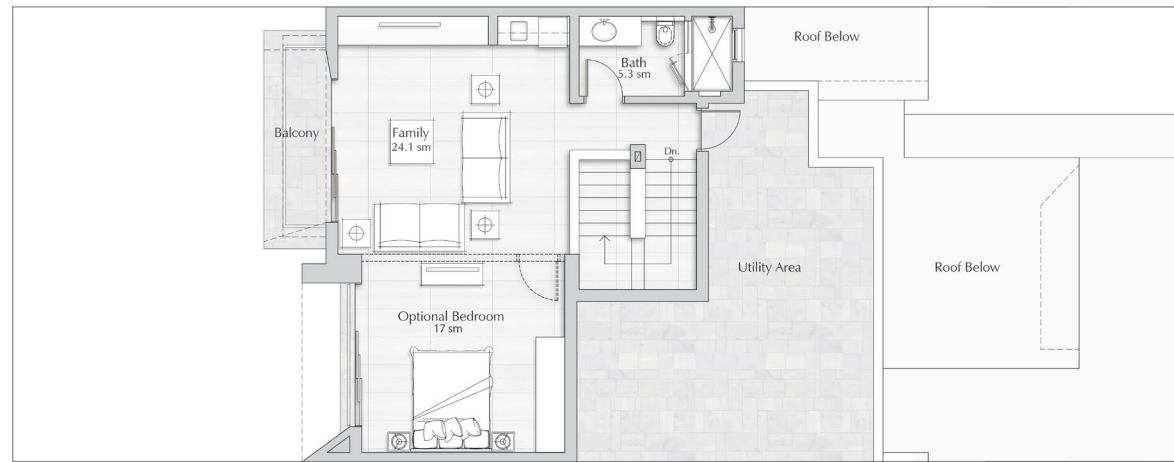


Townhouse 2

| PLOT AREA (S.M) | BUA (S.M) | NO OF BR | UNITS NO |
|-----------------|-----------|----------|----------|
| 217.7 to 243.3 | 272.9 | 3 to 4 | 12 |

- KEY FEATURES:**
1. Optional penthouse.
 2. TH2 Units have Greenbelt views.
 3. TH2 Units are part of the townhome clusters.





Townhouse 2

OPTIONAL PENTHOUSE

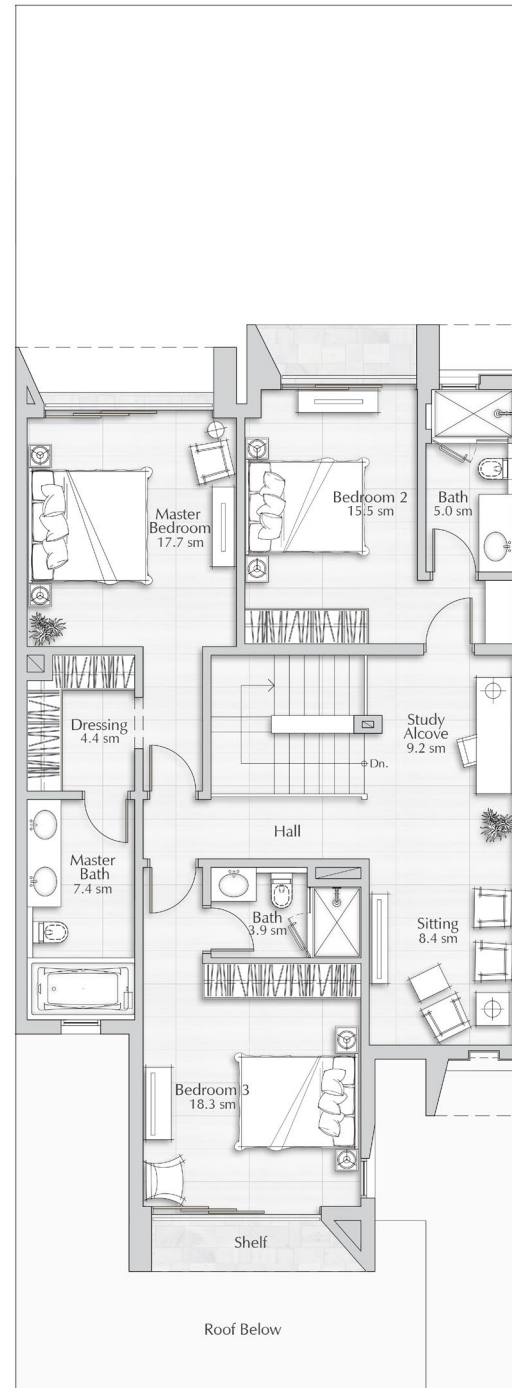
66.7

The flexibility of adding an additional penthouse to offer more livable space

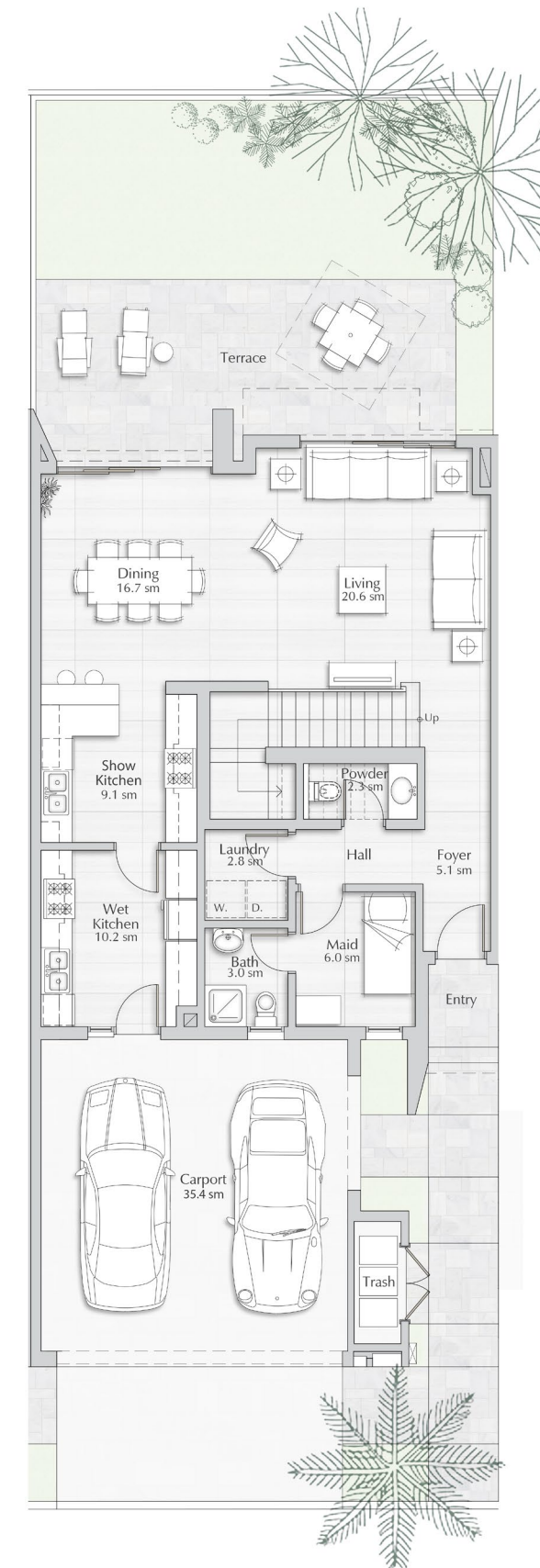




First Level



Entry Level



Townhouse 3

PLOT AREA (S.M)
213.2 to 286.7

BUA (S.M)
271.5

NO OF BR
3

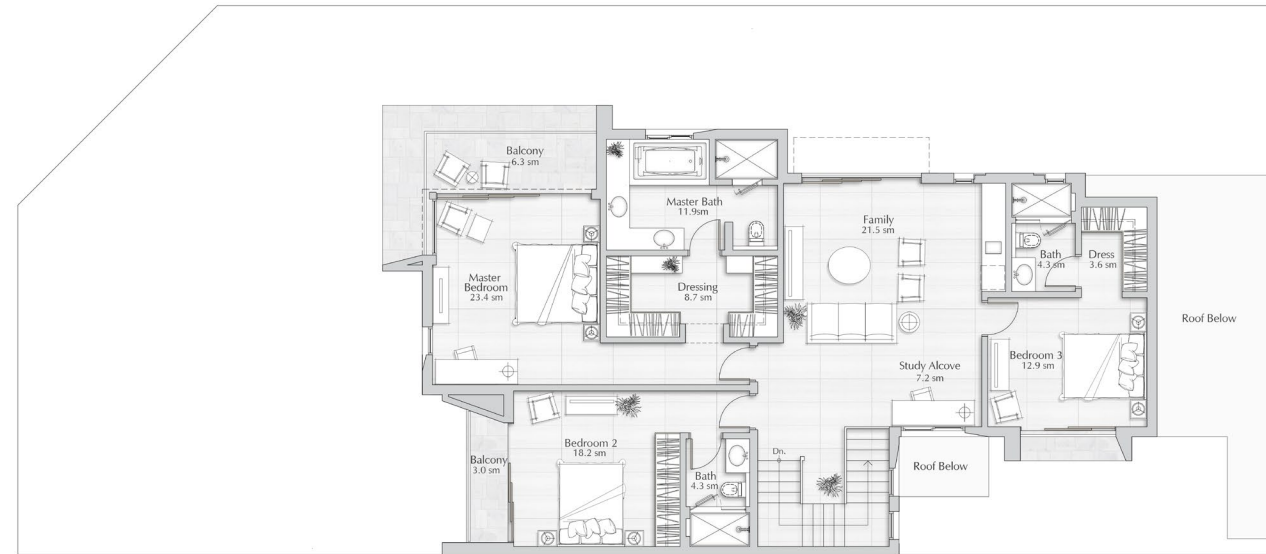
UNITS NO
38

KEY FEATURES:

1. Some units have Greenbelt views.
2. Some units are near the Mosque/Retail Area.



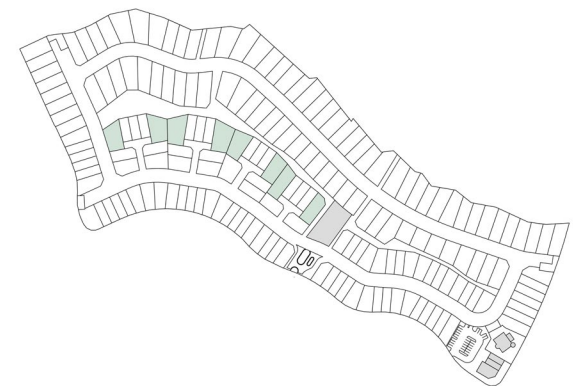




Townhouse 4

| PLOT AREA (S.M) | BUA (S.M) | NO OF BR | UNITS NO |
|-----------------|-----------|----------|----------|
| 405.5 to 551.3 | 348 | 3 | 8 |

- KEY FEATURES:**
1. TH4 Units have Greenbelt views.
 2. TH4 Units are part of the townhome clusters.





Amenities



If you are looking for your next home, then "Tilal" is your desired destination where you can relax and have a morning swim at our recreational center or have a short walk for your grocery at our cozy supermarket, or to have a quick cup of coffee before going to work.

